

HT-S rotary valve

A rotary and dispenser valve for use as an air lock in high vacuum systems and as a dispenser valve under silos and bunkers. Suitable for the transport of powders and granules with medium differential pressure levels. The ability to use these valves in environments with high temperatures (max. 300°C) and with abrasive substances are key reasons to opt for this type of valve.

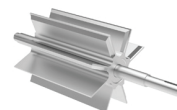
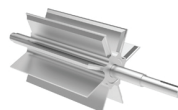
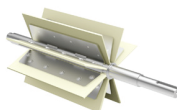
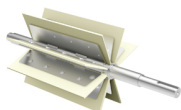


Available in heat resistant version up to 300°C and an Easy Clean version

Properties

- Modular concept with numerous rotor variants
- External ball bearings
- Gland packings, adjustable
- Standard color RAL 5009
- Can be used for differential pressure up to 0.4 bar
- Interchangeable with HT250/350
- This valve range is fitted with a SEW gear motor (0.37 kW - 0.55 kW) as standard
- Numerous options available
- Standard cast iron house and covers
- HT-S-A version: For use in ATEX zones, our rotary valves can be delivered with EX II 1D/* *D cT4 (**2 or 3D) certification, suitable for use in either ATEX zone 21 or 22.

Rotor variants



Rotor type	1	2	3	4
Description	Steel/Vulkollan (PU) 4 mm	Stainless steel 304/Vulkollan (PU) 4 mm	Manganese steel cast*/welded	Stainless steel 316 cast*/welded

* for the HT250S

Technical information

Type	250-S	350-S
Volume capacity (Liters per revolution at a fill level of 100%)	7	20
Number of rotor blades	8	8

Max. differential pressure	Operating temperature
0.4 bar	-15 to 60°C (80°C for metal blades)

HT-S-EX Version: flame proof and pressure surge-resistant

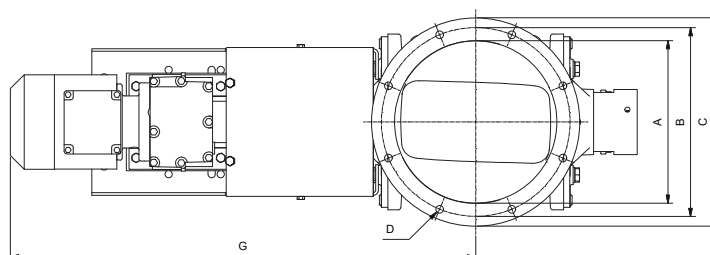
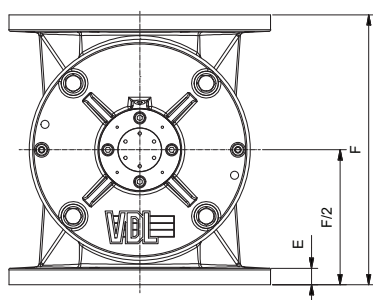
Our HT-S rotary valves also come in EX certified versions, for use as explosion barrier. The versions with Vulkollan (PU) rotorblades are flame-resistant and explosion proof up to 1.7 bar and the versions with steel or stainless steel rotor blades up to 2.5 bar. Standard finish: RAL 3020.

Certification: CE 0588 II 1/2 D Ex h IIB T135° Da/Db D FSA 15 ATEX 1661/1662 X.

HTS rotary valve

Dimensions, speed and weight

Type	Size (mm)							Speed (rpm)	Weight (kg)
	ø A	ø B	ø C	D	E	F	G		
HT250-S	250	290	320	8 x ø12	20	330	710	32	125
HT350-S	340	390	420	8 x ø12	20	400	830	32	145



You can find more information about our rotary valves in our catalogue

Options & accessories



NEW: Quick-disassembly Easy Clean version

A new, quick-disassembly variant of the HT-S rotary valve. This HT-S Easy Clean rotary valve combines the qualities of the HT-S with a high degree of cleaning efficiency, because the rotor can be removed and replaced easily and without tools. Cast iron house, chemically nickel-plated, suitable for e.g. food. The stainless steel AISI316 rotor, casted in one piece, has a stainless steel slide with aluminum bearing housings.

More options

rotor polishing
teflon coating
wear-resistant coatings
special rotorblades

HT/HT-S/MD

